

JAGUAR 2011 XF

PRECAUTIONS

Warning: Batteries produce explosive gases which may cause personal injury. Do not expose the battery to flame or sparks. When charging or working near a battery, wear protective clothing and eye protectors. Always provide adequate ventilation. Do not smoke when working near batteries. Failure to follow these instructions may result in personal injury.

Warning: Batteries contain sulfuric acid, so avoid contact with skin, eyes and clothing. Shield your eyes when working near the battery to protect against possible contact of the acid solution. In case of contact with the skin or eyes, flush immediately for a minimum of fifteen minutes and seek prompt medical attention. If swallowed, call a physician immediately. Failure to follow these instructions may result in personal injury.

Warning: Ensure the engine is not running and all electrical systems are off before disconnecting or connecting the battery ground cable. Failure to follow these instructions may result in damage to the electrical system.

Before disconnecting the battery, ensure that no data is required from the Powertrain Control Module (PCM), as battery cable disconnection will erase any fault codes and idle/drive values held in the Keep Alive Memory (KAM). It is not required to disconnect or remove electronic control modules.

When the battery is disconnected, all previous climate control assembly settings and fault codes will be lost. It is required to record any settings or fault codes before battery disconnection.

Mounted on the battery ground terminal is a battery monitoring system module. The battery monitoring system module is integral with the battery ground cable and is controlled by the Engine Control Module (ECM). If a new battery is installed, the battery monitoring system module will require re-calibration using suitably programmed equipment. Replacement of the

battery monitoring system module requires no action as the module will re-calibrate automatically.

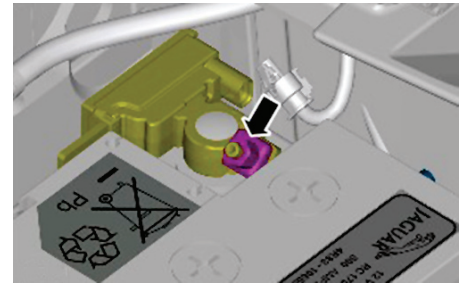
BATTERY Removal

The battery is located under the floor in the righthand side of the luggage compartment. Always disconnect the ground cable from the battery first and connect it last.

1. Obtain and record audio unit preset radio frequencies.
2. Raise and secure luggage compartment floor covering.
3. Release clip and disconnect battery monitoring system module harness, **Fig. 1**.
4. Disconnect battery ground cable.
5. Remove cap on battery positive cable.
6. Disconnect battery positive cable.
7. Detach battery vent tube, **Fig. 2**.
8. Remove mounting fasteners and remove battery hold down, **Fig. 3**.
9. Remove battery.

Installation

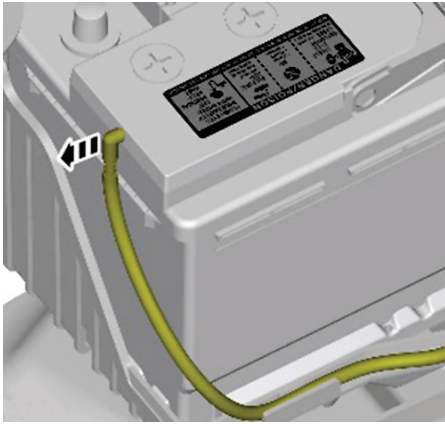
1. Install battery.
2. Install battery hold down.
3. **Torque** battery hold down clamp mounting nuts to 115 inch lbs.
4. Attach battery vent tube.
5. Connect battery positive cable first, then connect battery ground cable.
6. Install cap on battery positive cable.
7. Connect battery ground cable.
8. Verify that battery clamps are correctly positioned on terminals when installed, **Fig. 4**.
9. **Torque** battery cable clamp nuts to 53 inch lbs.
10. Connect battery monitoring system module harness.
11. Lower luggage compartment floor covering.
12. Reset battery monitoring system using suitably programmed diagnostic equipment.
13. When battery has been disconnected and connected, settings for window



BTY120000000619

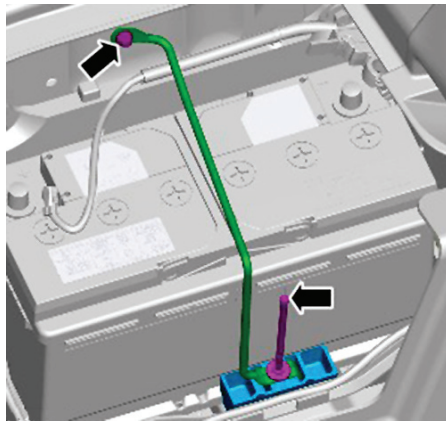
Fig. 1 Battery monitoring system module harness removal

- “one-touch” facility and anti-trap facility will have been erased. After connecting, it is required to initialize each door window motor separately to operate “one-touch” up function. Initialize door window motors as follows:
- a. Operate window control switch until door window glass is in fully closed position, then continue to operate window control switch for a further two seconds.
 - b. Release window control switch.
 - c. Operate window control switch in closed position and continue to operate window control switch for a further two seconds.
 - d. Operate window control switch until door window glass is in fully open position (“one-touch” down).
 - e. If door window motor initialization has been completed correctly, when window control switch is operated, door window glass should move to fully closed position (“one-touch” up) automatically. If door window glass does not fully close automatically (“one-touch” up), repeat complete procedure.
 - f. Repeat door window motor initialization for each door window motor.
14. Reset clock and enter audio unit preset radio frequencies.
 15. Start engine and allow to idle until engine reaches normal operating temperature.
 16. Switch engine OFF.



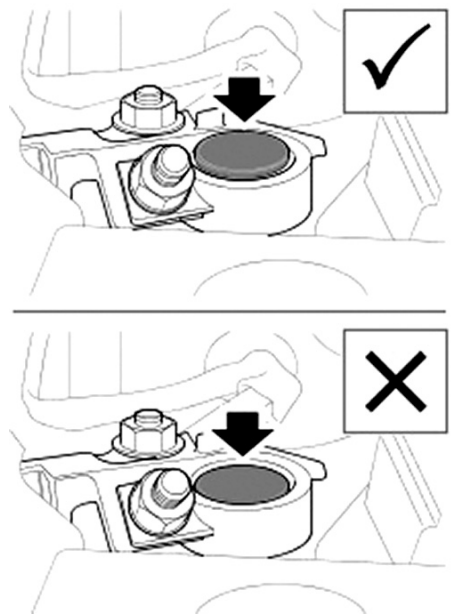
BTY120000000617

Fig. 2 Vent tube removal



BTY120000000618

Fig. 3 Battery hold down removal



BTY120000000612

Fig. 4 Battery terminal installation

The material herein may not be used without the prior express written permission of the copyright holder, including, but not limited to reproduction or transmission in any form by any means such as electronic, mechanical, photocopying, recording or otherwise; nor may it be stored on any retrieval system of any nature.

"The data reported herein has been compiled from authoritative sources. While every effort is made by the analysts to attain accuracy, manufacturing changes as well as typographical errors and omissions may occur on occasion. The publisher cannot be responsible nor does it assume any responsibility whatsoever for such omissions, errors or changes."

"This product contains material that is reproduced and distributed under a license from Land Rover, Volvo, Ford & Jaguar. No further reproduction or distribution of this material is allowed without the express written permission of Land Rover, Volvo, Ford or Jaguar."

MOTOR INFORMATION SYSTEMS
MOTOR is a trademark of Hearst Business Media
A Unit of Hearst Corporation
1301 W. Long Lake, Suite 300
Troy, MI 48098

Copyright © 2012 Hearst Business Media. All rights reserved.