

BMW 2012-14 335i

PRECAUTIONS

Warning: Batteries produce explosive gases that may cause personal injury. Do not expose battery to flame or sparks. Always provide adequate ventilation. Do not smoke when working near batteries. Do not place tools or any similar object on battery.

Warning: Do not allow any battery acid to come into contact with eyes, skin or clothing. Wear protective clothing, gloves and eye protection. Do not tilt battery, acid may leak from vent hole.

Warning: If acid is splashed into eyes, rinse them immediately for several minutes with clear water and consult a doctor immediately. Seek medical attention immediately if battery acid is accidentally swallowed. If acid is splashed onto skin or clothing, neutralize it immediately with a soap solution and rinse with lots of water.

On vehicles equipped with intelligent battery sensor (IBS), do not under any circumstances release socket head cap screw of IBS. Do not establish any connection between IBS and sensor screw.

The IBS and wiring can be destroyed by mechanical strain during battery replacement. Do not use force when disconnecting pole shoe from battery terminal. Do not pull on ground cable. Do not place any tools under IBS to lever off pole shoe. Do not use IBS connections as levers.

On vehicles with radio code, radio code must be entered after disconnecting battery. Note stored stations and restore them after connecting battery. Stored settings of on-board computer and clock will also be lost. All available central keys must be coded for vehicles with first generation infrared transmitter locking systems. DTCs may be set in some control units after battery is connected.

BATTERY

Removal

Disconnect battery ground cable first,

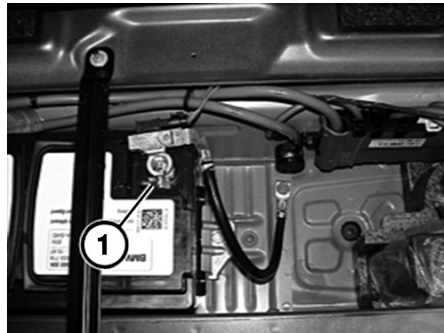


Fig. 1 Battery ground cable removal

followed by battery positive cable. Do not disconnect battery leads while engine is running.

Do not under any circumstances use force to pull off ground cable.

Do not under any circumstances pull or lever safety battery terminal off by force.

1. Open flap in luggage compartment panel on righthand side.
2. Loosen nut (1) and pull off battery ground cable with IBS in an upward direction, place to one side and secure, **Fig. 1**.
3. Open cover (1) and loosen nut (2) below it, **Fig. 2**.
4. Disconnect safety battery terminal (3) towards top, lay to one side and secure, **Fig. 2**.
5. Remove screws (1) and retaining brackets (2), **Fig. 3**.
6. Disconnect vent hose (3) from battery (4), **Fig. 3**.
7. Remove screw (1) and holder (2), **Fig. 4**.
8. Remove battery from vehicle.

Installation

When installing a new battery in vehicles equipped with IBS, replacement battery information may need to be programmed into vehicle data in accordance with specifications.

1. Install battery into vehicle. Ensure battery is correctly seated in mounting.

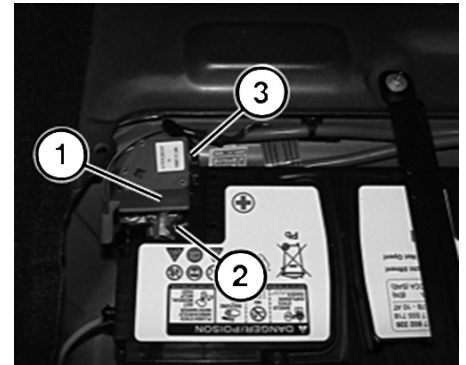


Fig. 2 Battery positive cable removal

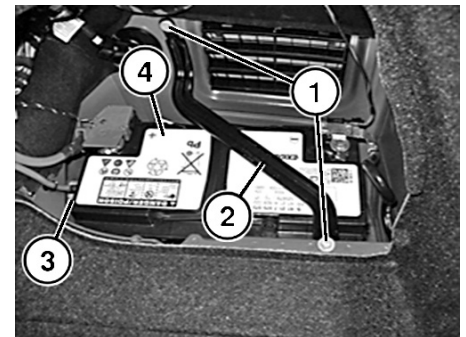
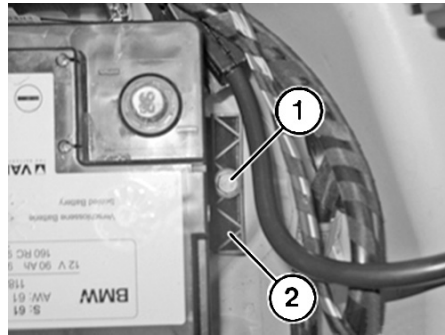


Fig. 3 Retaining bracket removal

2. Install holder (2) and screw (1), **Fig. 4**. **Torque** screw to 71 inch lbs.
3. Connect vent hose (3) to battery (4), **Fig. 3**.
4. Install retaining brackets (2) and screws (1), **Fig. 3**. **Torque** screws to 71 inch lbs.
5. Connect safety battery terminal (3) and **torque** nut (2) to 44 inch lbs., **Fig. 2**.
6. Close cover (1), **Fig. 2**.
7. Connect battery ground cable with IBS and **torque** nut (1) to 44 inch lbs., **Fig. 1**.
8. Close flap in luggage compartment panel on righthand side.



BTY140000000152

Fig. 4 Battery holder removal

The material herein may not be used without the prior express written permission of the copyright holder, including, but not limited to reproduction or transmission in any form by any means such as electronic, mechanical, photocopying, recording or otherwise; nor may it be stored on any retrieval system of any nature.

"The data reported herein has been compiled from authoritative sources. While every effort is made by the analysts to attain accuracy, manufacturing changes as well as typographical errors and omissions may occur on occasion. The publisher cannot be responsible nor does it assume any responsibility whatsoever for such omissions, errors or changes."

MOTOR INFORMATION SYSTEMS
MOTOR is a trademark of Hearst Business Publishing, Inc.
A Unit of Hearst Corporation
1301 W. Long Lake, Suite 300
Troy, MI 48098

Copyright © 2016 MOTOR Information Systems, a division of Hearst Business Publishing, Inc. All rights reserved.
