

DCM0075U
NEW CASE



DEEP CYCLE MOBILITY



DCM0075U VALVE-REGULATED LEAD-ACID BATTERY FOR DEEP-CYCLE APPLICATIONS

FEATURES

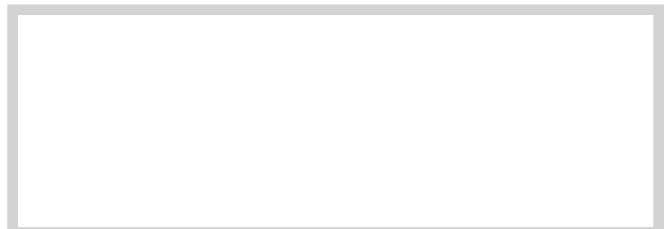
- Robust plate for extended cycle life
- Computer-generated grid design optimized for high-power density
- Low-calcium grid alloy for reduced gas emissions and ease of recycling
- Flame-arresting, one-way pressure-relief vent for safety and long life
- UL-recognized component
- Multicell design for economy of installation and maintenance
- Case and cover available in standard polypropylene
- Thermally welded case-to-cover bond to eliminate leakage
- Carrying handles
- Can be used in any orientation: upright, side or end mounting recommended
- Longest cycle life available
- Absorbed Glass Mat (AGM) technology for efficient gas recombination of up to 99% and freedom from electrolyte maintenance
- Not restricted for air transport — complies with IATA/ICAO Special Provision A67
- Not restricted for surface transport — classified as nonhazardous material as related to DOT-CFR Title 49 parts 173.159
- Not restricted for water transport — classified as nonhazardous material per IMDG Amendment 27
- Manufactured by an ISO9001 certified facility

12 Volts — 75 Amp-Hour
Capacity @ 20-Hour Rate

Ampere-Hour Capacity to 1.75 Volts per Cell @ 77° F (25° C) 10.5 Volts per 12 Volt Battery

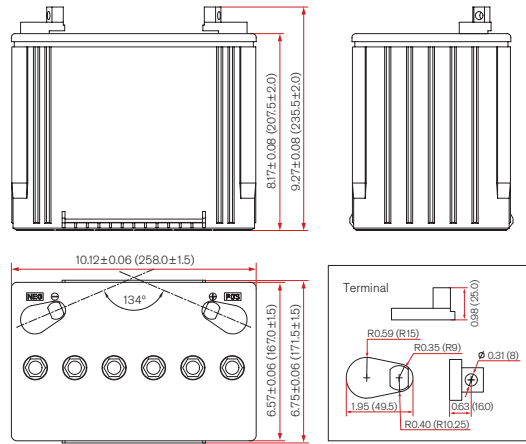
	Approximate Discharge in Hours			
	20	10	5	1
Amp-Hour Capacity	75	70	56	38

Interstate Battery System International, Inc.
12770 Merit Drive, Suite 1000
Dallas, TX 75251
Customer Service: 1-888-772-3600



DCM0075U

NEW CASE



*All dimensions in inches and (millimeters).
 All dimensions are for reference only.
 Contact an Interstate representative
 for complete dimensional information.

Line drawing as of date code TWD19 or April 2009.

DEEP CYCLE MOBILITY

DCM0075U Specifications

Cells Per Unit	Voltage Per Unit	Weight	Electrolyte	Max. Discharge Current	Short Circuit Current	Ohms Imped. 60 Hz
6	12	47.8 lbs. 21.7 kg	Absorbed H ₂ SO ₄ SG = 1.30	350 Amps	1050 Amps @ 0.1 sec.	8 mΩ

Capacity	75 Ah @ 20 hr. rate to 1.75 volts per cell @ 77°F (25°C)
Operating Temperature Range (with temperature compensation)	Discharge: -40°F (-40°C) to +160°F (71°C) Charge: -10°F (-23°C) to +140°F (60°C)
Recommended Operating Temperature Range	+74°F (23°C) to +80°F (27°C)
Equalization and Cycle Service Charging and Current Limits	≤30 A, 14.5 V - 14.9 V
Float Voltage	13.5 - 13.8
Self Discharge	Interstate batteries may be stored for up to six months at 77°F (25°C), and then a freshening charge is required. For higher temperatures, the time interval will be shorter.
Terminal	Universal: semi-round bolt through (hardware included)

Amperes @ 77° F (25° C)

End Point Volts/Cell	A: Amps W: Watts	5 min.	10 min.	15 min.	30 min.	1 hr.	2 hr.	3 hr.	4 hr.	5 hr.	8 hr.	10 hr.	20 hr.
9.60V	A	259	189	133	81	42	25	18	14	11.6	8.1	7.4	4
	W	2750	2007	1412	855	486	284	208	162	134	94	85	46
10.20V	A	228	172	119	76.3	39.5	23.4	17.5	13.7	11.3	8	7.2	3.9
	W	2566	1911	1321	847	457	271	203	158	131	92	83	44.8
10.50V	A	220	164	112	74	38	22.8	17.1	13.4	11.2	7.9	7	3.8
	W	2493	1857	1270	841	443	264	198	156	130	92	82	44.3
10.80V	A	211	155	105	72	37	22.3	16.7	13.2	10.9	7.7	7	3.8
	W	2461	1809	1222	839	430	259	194	152	127	90	81	44
11.10V	A	203	147	98	70	36	21.7	16.1	12.8	10.6	7.5	6.7	3.6
	W	2416	1749	1166	833	425	258	192	152	127	89	79	42.7

Constant Current Discharge Ratings